

9



9 the image shows the final result.

Facia plate installation kit for:

SMART

Model: ForTwo / ForFour

Year: 2015>

Kit content: double DIN facia plate
mounting brackets + screws

Compatibility: compatible with Alpine INE-W997D

Customer code:



INSTALLATION MANUAL



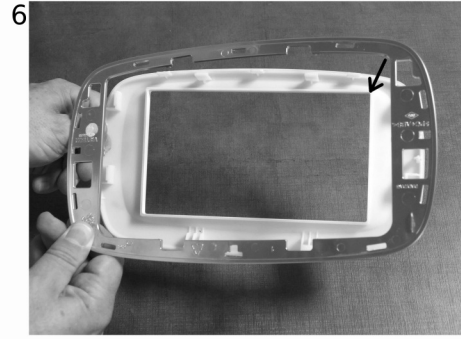
1 Carefully remove the plastic cover from the radio panel. Save the silver cover.



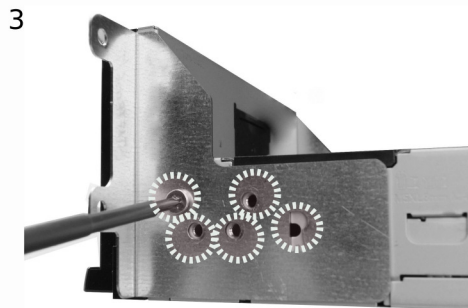
5 Remove the silver frame from the original white cover.



2 Unscrew and save the four screws shown in the picture and remove the original radio.



6 Fix the silver frame on the supplied fascia plate.



3 Mount the supplied brackets with the four supplied screws as shown in the picture.



7 Mount the frame so that the marking remain visible.



4 Do all connections and verify the proper functioning of the system. Use the screws saved before for fix the aftermarket radion to the dashboard.



8 Mount the cover as shown in the picture.